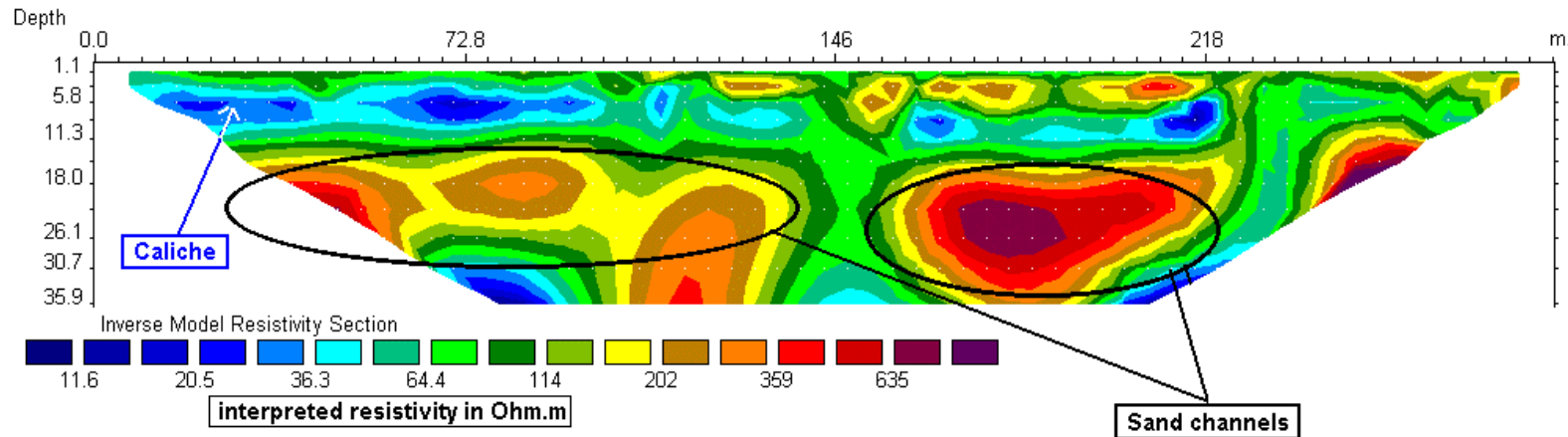


CASE HISTORY – POLLUTION STUDY

APPLICATION: ENVIRONMENT



Resistivity data interpretation in 2D

SYSCAL TYPE: SYSCAL JUNIOR SWITCH-48

ELECTRODE ARRAY: Schlumberger-Wenner

NUMBER OF MEASUREMENTS: 735

SPACING BETWEEN ELECTRODES: 4.5 m

SITE: United States (Texas) for USGS – Very noisy industrial area

GEOLOGY: Sandy clay area in surface then sandstone (caliche) and clay

SURVEY DURATION: 4 hours (setup of the system + acquisition time (main sequence+ 1 roll along))