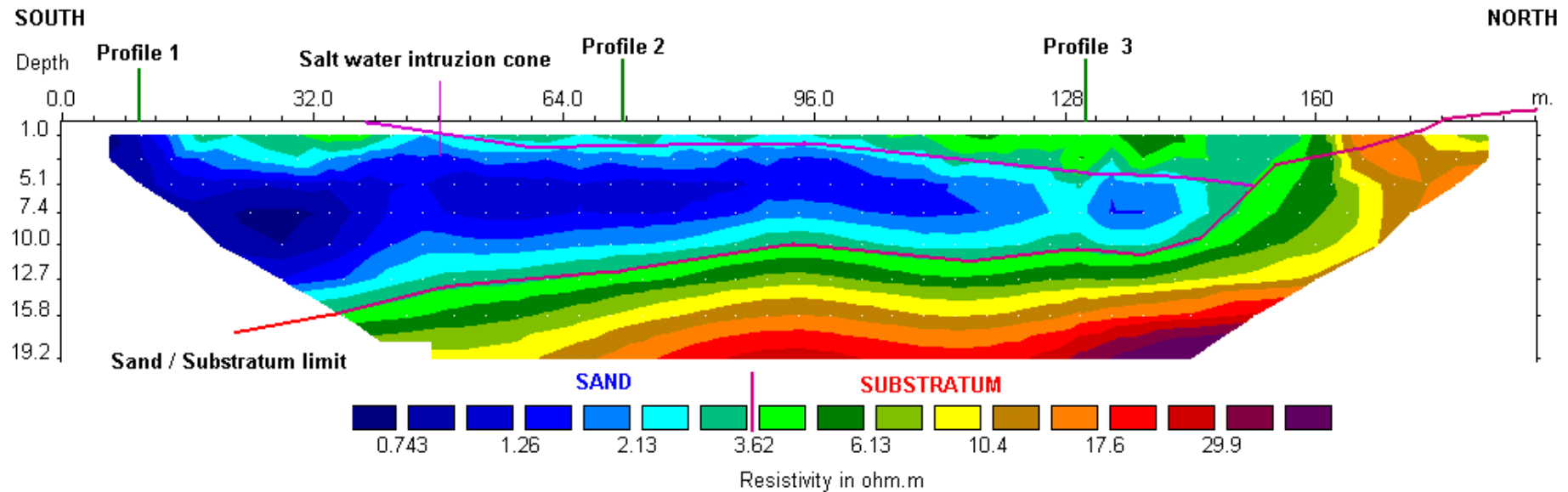


# CASE HISTORY – ENVIRONMENTAL STUDY

APPLICATION: DETECTION OF SALT WATER INTRUSION IN SAND LAYERS NEAR THE SEA COST



SYSCAL TYPE: **SYSCAL R1 Plus SWITCH-48**

ELECTRODE ARRAY: **Schlumberger-Wenner**

NUMBER OF MEASUREMENTS: **362**

SPACING BETWEEN ELECTRODES: **4 m**

SITE: **Spain – Basque Country**

SURVEY DURATION: **1 hour (setup + acquisition time)**