

# FULLWAVE DESIGNER

## TO DESIGN YOUR OWN SURVEY WITH FULLWAVE SYSTEMS

Place rapidly your systems on a georeferenced map, locate your V-Fullwavers electrodes and injection places. Check that the report points are located inside your target. Check that all depths are investigated and that the maximal investigation depth is greater than the one of the target. Create rapidly images and schemes for your reports and export a datasheet containing all electrodes location for a quick and accurate setup by low qualified staff.

DESIGN YOUR  
SURVEY ON A GRID

VISUALIZE  
ELECTRODE  
LOCATION ON  
GOOGLE EARTH

VISUALIZE REPORT  
POINTS LOCATION

COMPUTE DEPTH OF  
INVESTIGATION AND  
CHECK IF THE  
TARGET IS REACHED

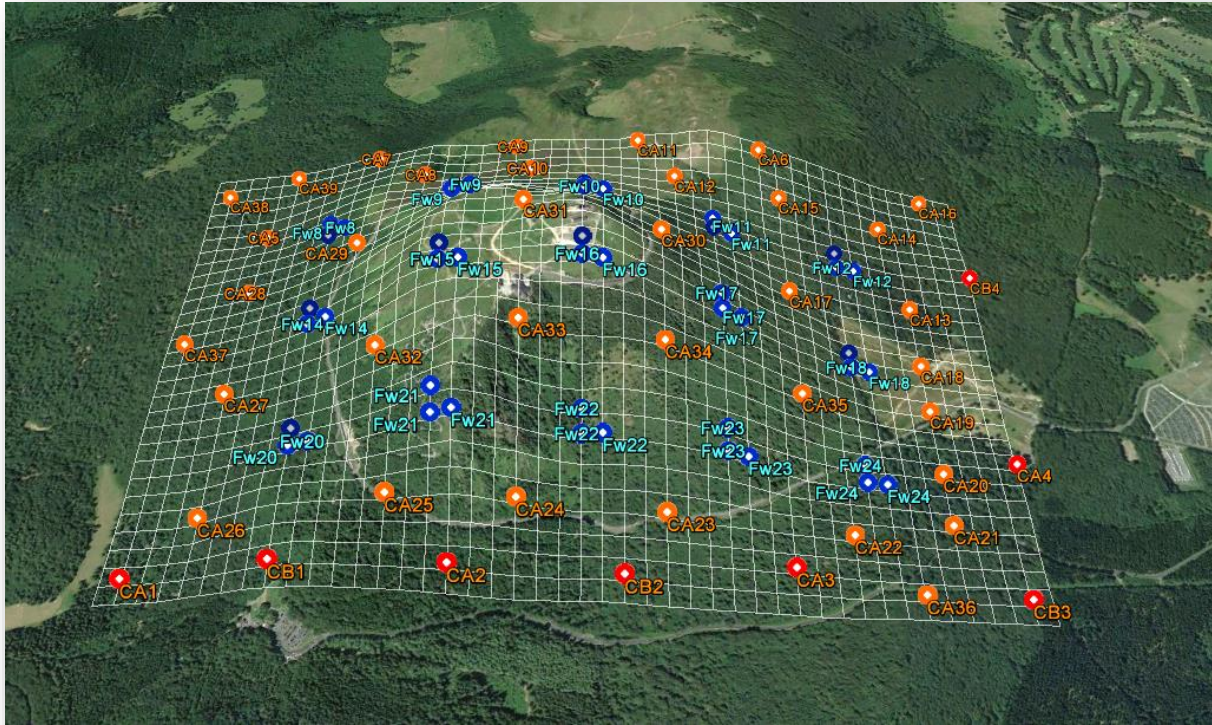
GENERATE  
DATASHEET WITH  
ELECTRODE  
COORDINATE FOR AN  
QUICK AND  
ACCURATE SETUP

**IRIS INSTRUMENTS**

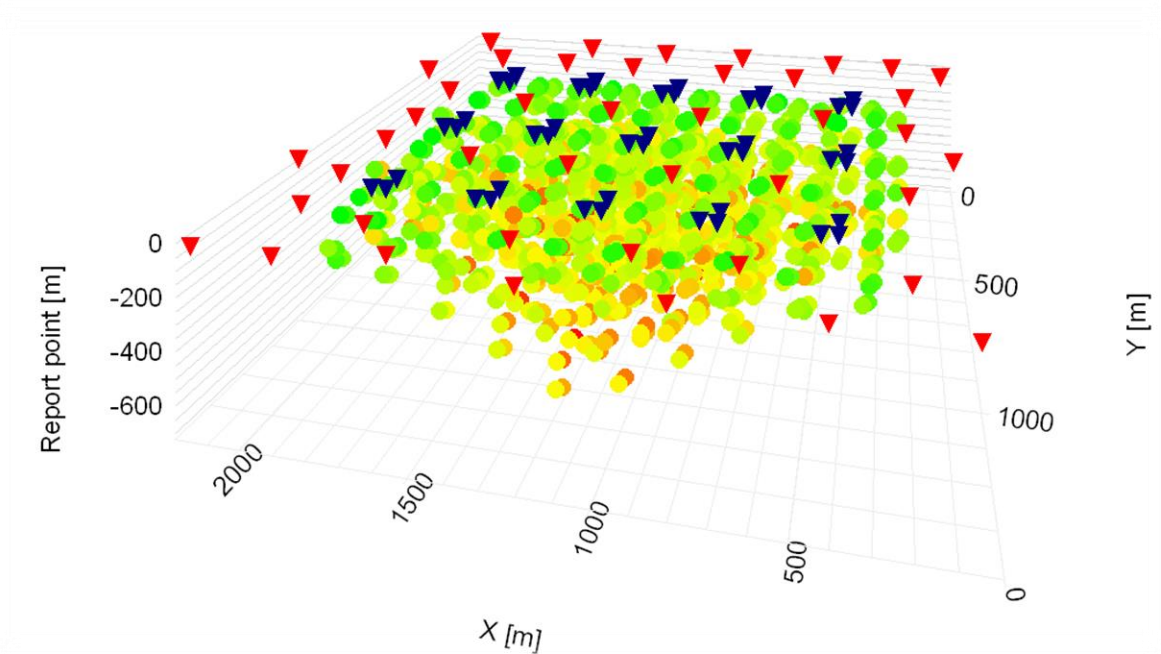
1 Avenue Buffon  
45000 Orléans, France  
Phone : +33 238-638-100

[www.iris-instruments.com](http://www.iris-instruments.com)





Visualize electrode coordinates on Google Earth© and check that each position is accessible



Visualize report points, depths of investigation and geometric factors of your survey