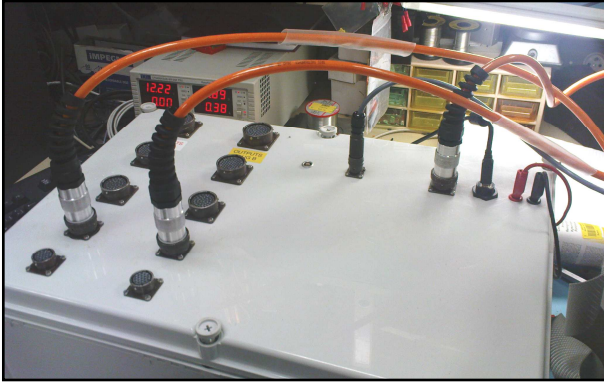


## ProTester



**ProTester control box**

### CONTROL BOX FOR SWITCH SYSTEM

Automatic control of:

- Multi-conductor switch cables
- Connecting boxes of switch cables
- Syscal Pro units
- Switch Pro units

The ProTester box can be used for the following tests:

- **Pin to Pin continuity test:**

A measurement of resistance is done between the plugs connected into the front panel sockets of the ProTester box.

This allows to be sure of the good continuity condition of the plugs of the Multi-conductor switch cables and of the sockets of the connecting boxes.

- **Pin to Take-out continuity test:**

A measurement of resistance is done between the plugs connected into the front panel sockets and the corresponding take-out of the multi-conductor switch cable.

This allows to be sure of the good continuity condition of the Multi-conductor switch cables.

- **Electrical Isolation test:**

An injection is done in each pin (800V by default (the value can be modified depending on the specifications of your own cables) and a resistance measurement is done in other pins.

This allows to be sure of the perfect electrical isolation of the Multi-conductor switch cables, of the Connecting boxes and of the Syscal Pro and Switch Pro units

- **Relays test:**

A measurement of the resistance of each relay of the switching boards is done.

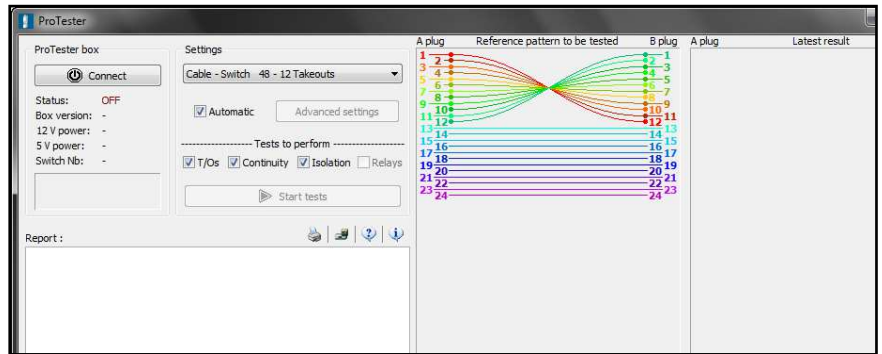
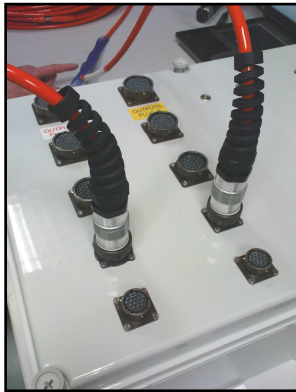
This allows to be sure of the perfect operating of the internal switching relays board of the Syscal Pro and Switch Pro units.

- **Self test:**

The ProTester box itself can be tested to check the electrical isolation and the output continuity of the front panel sockets.

The short cable pieces used to test the Switch Pro units and the Connecting boxes can be also controlled in that way.

# ProTester



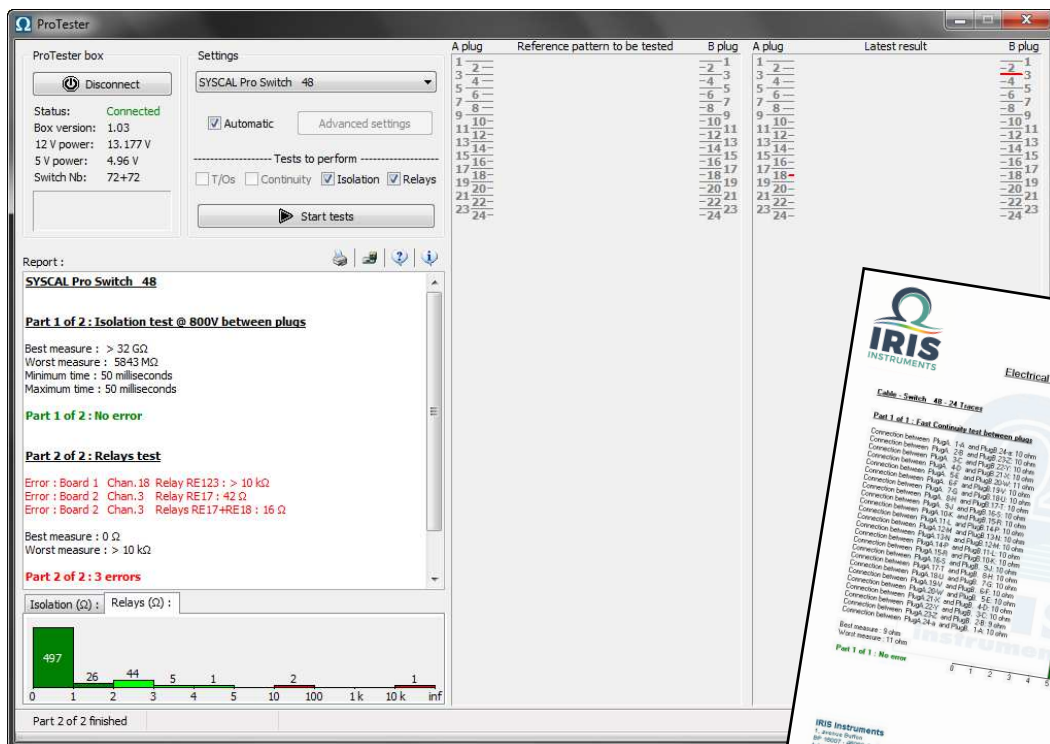
Multi-conductor switch cable in test

Setup and wiring of the switch cable in test (ProTester PC software)

The ProTester box is fully controlled by the "ProTester" PC software.

The software is compatible with any type of Windows environment.

Communication between the PC and the ProTester box is made by the *IRIS Instruments* USB cable.



Final Report File

At the end of the process, the results of the tests are displayed and a final report file is automatically created and stored in the PC (for example, a faulted relay of a switch board or a take-out of a Multi-conductor switch cable having a poor contact will be mentioned).

Specifications subject to change without notice BR\_ACC\_PTES\_GB\_V1



IRIS INSTRUMENTS - 1, avenue Buffon - 45100 Orléans - France  
Phone: +33 (0)2 38 63 81 00 - Fax: +33 (0)2 38 63 81 82  
E-mail: sales@iris-instruments.com - Web site: www.iris-instruments.com