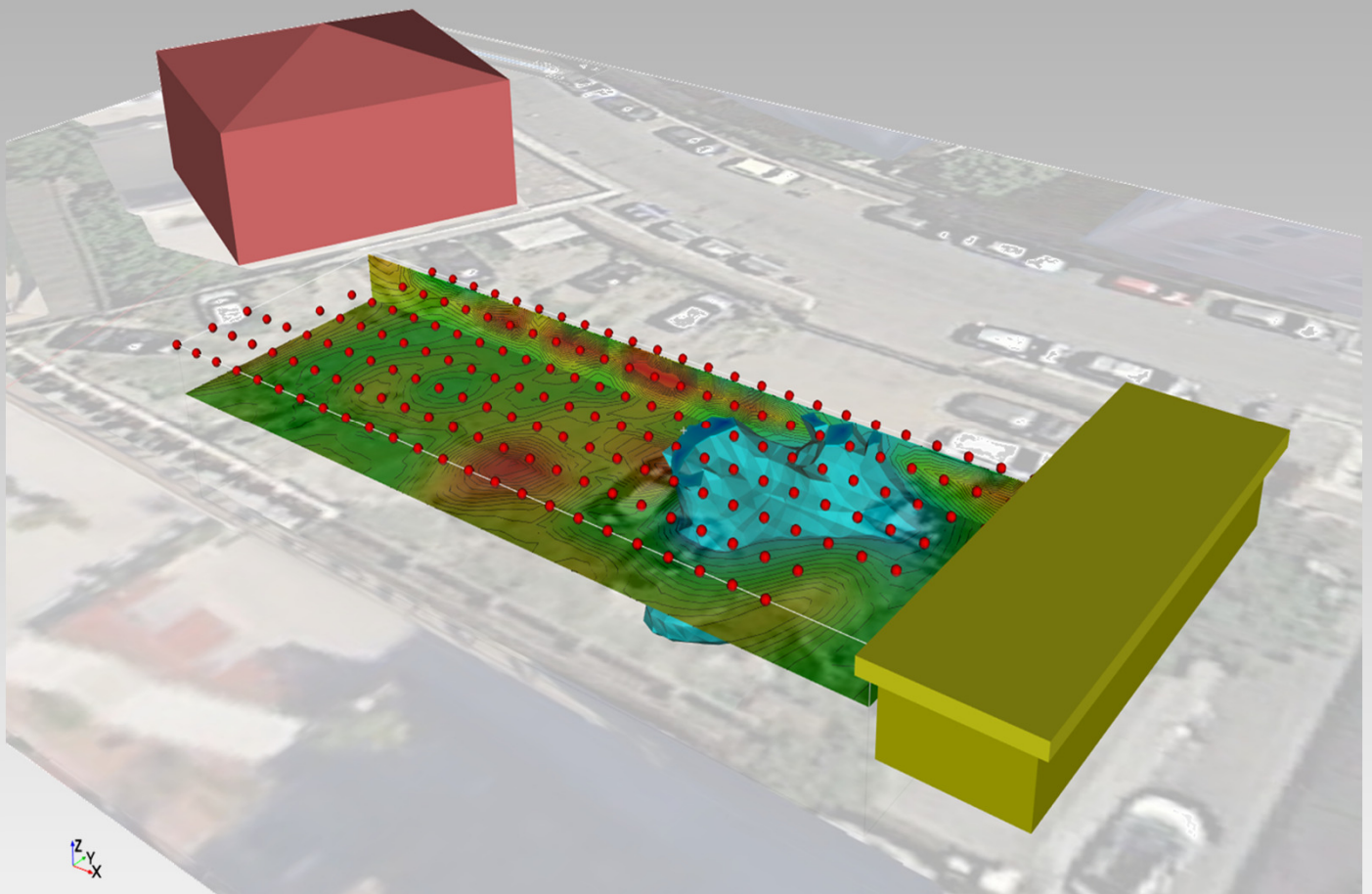


ERTLab *ViewLab3D*

New generation tool for 3D visualization of inverted resistivity/chargeability model



MAIN FEATURES

- Import and creation of graphical objects, .dxf files, aerial pictures, volumes
- Transparency function to graphical object
- Automatic generation of 2D sections from 3D model
- Resistivity volumes generation
- Possibility of import for different models in the same 3D window
- Several colour scales available
- Display sections in xy, yz, xz or any generic direction
- Plumes extraction (volumes)
- Isosurface definition
- Orthographic/perspective view
- Axes properties definition, labels editing

